

Clinical Image

A Rare Cause of Hemoptysis Confused With Posttraumatic Acute Hemoptysis: Hughes-Stovin Syndrome Related to Behçet Disease



Una causa infrecuente de hemoptisis confundida con hemoptisis aguda postraumática: síndrome de Hughes-Stovin relacionado con la enfermedad de Behçet

Mutlu Ay, Gökhan Polat*, Bahar Yılmaz Çankaya

Department of Radiology, Faculty of Medicine, Ataturk University, Erzurum, Turkey

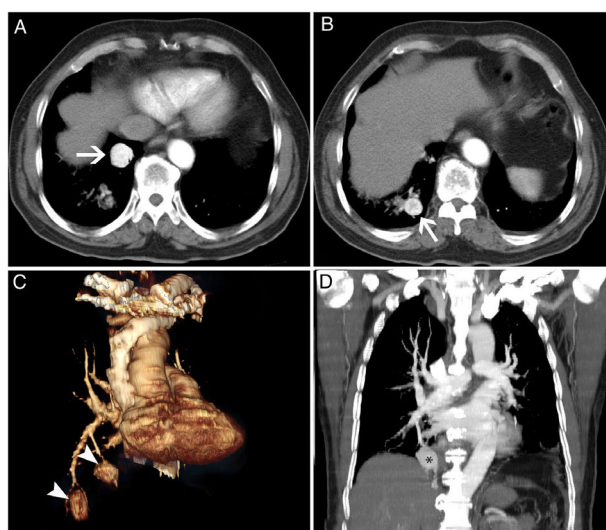


Fig. 1. Axial contrast-enhanced thorax CT images(A, B) showed two pulmonary aneurysms in the lower lobe of the right lung(Arrows). 3D volumetric reconstruction image(C) showed pulmonary artery connections and aneurysms (Arrowheads). Aneurysm(Asterisk) in the lower lobe of the right lung were observed in the thorax CT lung mediastinal window(D).

A 67-year-old male patient presented to our emergency department with acute hemoptysis after trauma. Contrast-enhanced thorax computed tomography (CT) was performed for hemoptysis and fracture evaluation. However, CT showed no fracture. CT showed two saccular aneurysms on the right lung lower lobe artery (Fig. 1). Also, CT showed ground glass densities in the right lung lower lobe parenchyma secondary to hemorrhage (Fig. 1). Physical examination and clinical history of the patient was investigated. He has oral ulcers, history of genital ulcers and eye lesions; the classical triad of Behçet disease. He also had a history of recurrent lower extremity venous thrombus. Lower extremity doppler ultrasonography revealed femoral vein thrombus.

Behçet's disease is a vasculitis disease that can affect all systems. Because of the disease can affect each size of the arterial and venous vessel it presents multisystemic involvement(1). Hughes-Stovin Syndrome is a rare form of Behçet's disease with lower extremity venous thrombosis and multiple pulmonary artery aneurysms.² Pulmonary artery aneurysms are usually multiple in the lower lobe main pulmonary arteries.^{1,2} Pulmonary aneurysms may respond to treatment or be a fatal complication of Behçet's disease.^{1,2}

References

1. Ghazaleh M, Fereydoun D, Hadi G, Abbas AS. Imaging manifestations of Behçet's disease: key considerations and major features. *Eur J Radiol.* 2018;98:214-25.
2. Anupama BK, Casey T, Rogin S, Jaswinder V, Debanik C. Hughes Stovin syndrome, a rare form of Behçet's disease presenting as recurrent intracardiac thrombus. *Cureus.* 2020;12:e7907.

* Corresponding author.
E-mail address: dr.g.polat@gmail.com (G. Polat).