



Clinical Image

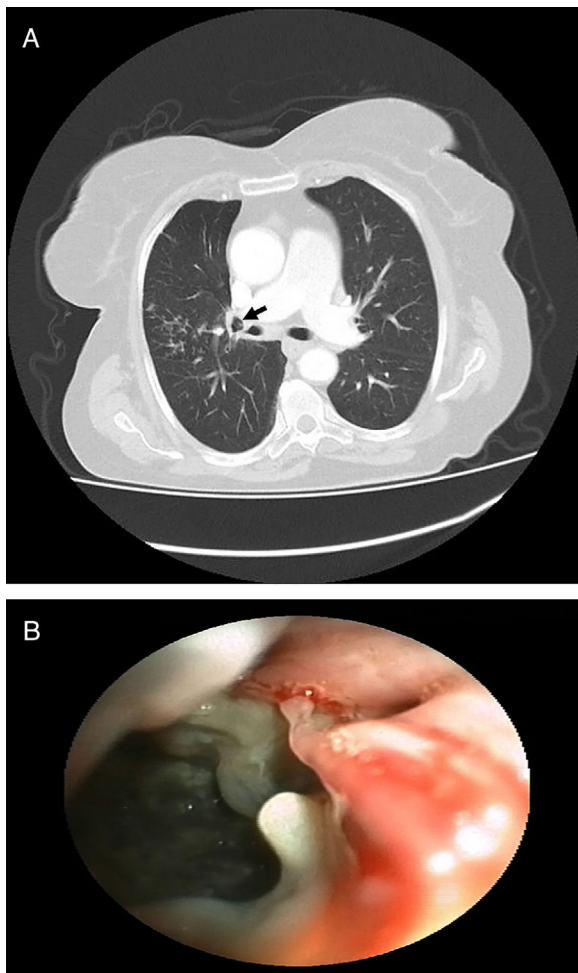
## Bronchonodal Fistula in an Immunocompetent Adult

### Fístula bronconodal en un adulto inmunocompetente

Şule Esen Karamise<sup>a</sup>, Sibel Gunay<sup>b</sup>, Ersin Gunay<sup>a,\*</sup>

<sup>a</sup> Department of Chest Diseases, Afyon Kocatepe University School of Medicine, Afyonkarahisar, Turkey

<sup>b</sup> Clinic of Chest Diseases, Afyon State Hospital, Afyonkarahisar, Turkey



**Fig. 1.** (A) Lung window of the thorax computed tomography revealed tree-in-bud appearance on the anterior segment of the right upper lobe. Black arrow shows bronchonodal fistula. (B) Bronchoscopic view of the bronchonodal fistula located at the right secondary carina (RC1).

A 83-year-old female patient presented to our clinic with complaints of chronic dry cough, weakness and anorexia. On her physical examination, inspiratory crackles were present on right upper lung field. Postero-anterior chest X-ray revealed infiltration on right middle zone. Her symptoms were not improved after antibiotic treatment. Acid fast staining (AFS) was negative for three sputum samples. Thorax computed tomography revealed tree-in-bud appearance on anterior segment of the right upper lobe (Fig. 1A). We performed fiberoptic bronchoscopy. On the right secondary carina (RC1), bronchonodal fistula was viewed. Additionally, anterior segment of the right upper lobe was obliterated (Fig. 1B and Video). Bronchial washing from right upper lobe and forceps biopsies from bronchonodal fistula were obtained. Biopsies revealed entirely necrosis. AFS of bronchial washing revealed positive. Patient was negative for human immunodeficiency virus infection and other major immunosuppression state. Patient was underwent anti-tuberculosis treatment for 6 months. At the end of the treatment, her symptoms and radiological findings were improved.

Lymph node in children or immunodeficient patients diagnosed with tuberculosis can erode adjacent bronchial walls which is called "bronchonodal fistula" and other organs including mediastinal vasculature and esophagus via inflammation and necrosis.<sup>1,2</sup> Bronchonodal fistula due to tuberculosis in adult immunocompetent patients are extremely rare.<sup>1</sup> During fiberoptic bronchoscopy procedure, bronchoscopists should kept tuberculosis related *bronchonodal fistula* in their mind if they saw erosion on the bronchial wall especially on secondary carina levels on both side.

#### Appendix A. Supplementary data

Supplementary data associated with this article can be found, in the online version, at [doi:10.1016/j.arbres.2018.01.025](https://doi.org/10.1016/j.arbres.2018.01.025).

#### References

1. Park SH, Jeon KN, Park MJ, Bae K, Cho SB, Kim HC, et al. Tuberculous bronchonodal fistula in adult patients: CT findings. *Jpn J Radiol.* 2015;33:360–5.
2. Lancella L, Nicolosi L, Bottero S, Carnevale E, Krzysztofciak A, Ticca F. Mediastinal tubercular lymphadenitis and adenobronchial fistulas (TABF) in the paediatric age 1980–2001 case record. *Infez Med.* 2003;11:75–80.

\* Corresponding author.

E-mail address: [ersingunay@gmail.com](mailto:ersingunay@gmail.com) (E. Gunay).