

## Clinical Image

# Silicone-induced Lymphadenopathy Mimicking Metastatic Lung Cancer

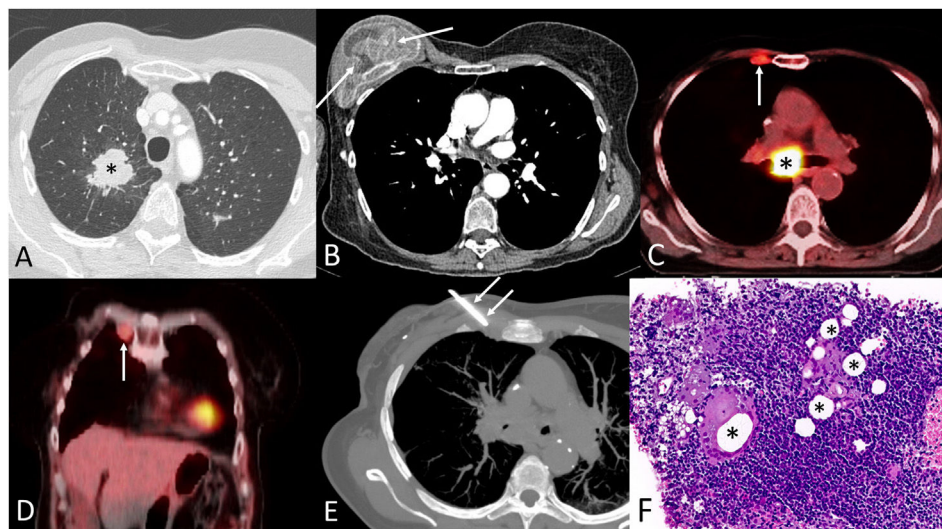


Sara González-Castro<sup>a,\*</sup>, Natalia Cadavid-Fernández<sup>b</sup>, Luis Gorospe Sarasúa<sup>c</sup>

<sup>a</sup> Department of Respiratory Medicine, Hospital Universitario Ramón y Cajal, Madrid, Spain

<sup>b</sup> Department of Pathology, Hospital Universitario Ramón y Cajal, Madrid, Spain

<sup>c</sup> Department of Radiology, Hospital Universitario Ramón y Cajal, Madrid, Spain



**Fig. 1.** (A) Thoracic axial CT image (lung window) shows a right upper lobe mass (asterisk). (B) Thoracic axial CT image (mediastinal window) performed 8 years earlier shows a ruptured right breast implant (arrows). (C and D) Axial (C) and coronal (D) chest fused PET/CT images show an enlarged FDG-avid right internal mammary lymph node (arrow); note an enlarged subcarinal lymph node (asterisk). (E) Thoracic axial CT maximum intensity projection image shows the core needle biopsy procedure targeting the right internal mammary lymphadenopathy (arrows). (F) Histological examination (hematoxylin–eosin staining; H&E, 20 $\times$ ) demonstrated silicone vacuoles (asterisks) and signs of foreign-body giant-cell reaction.

A 66-year-old smoking patient with a recent diagnosis of stage III lung cancer (Fig. 1A) underwent a PET/CT for staging purposes. The patient had a remote history of right breast cancer with simultaneous reconstruction with a silicone implant; however, this implant was ultimately removed due to rupture (Fig. 1B). PET/CT showed a hypermetabolic enlarged right internal mammary lymph node (Fig. 1C and D), concerning for stage IV lung cancer. Histological analysis of a CT-guided core needle biopsy of the internal mammary adenopathy (Fig. 1E) demonstrated a silicone-induced lymphadenopathy (SIL) and ruled out cancer cells (Fig. 1F). SIL is a rare complication associated with silicone breast implants that is usually asymptomatic and found incidentally on imaging studies. Silicone gel from ruptured implants may migrate into locoregional lymph nodes and induce inflammation. More importantly, SIL can mimic metastatic lymph nodes on imaging in cancer patients.<sup>1,2</sup> Physicians should have a high index of suspicion for SIL in patients carrying breast implants, particularly in patients in whom implants were removed (as in our case). The prognostic implication in our patient was paramount, since the confirmation of SIL ruled out a stage IV lung cancer.

\* Corresponding author.  
E-mail address: [sachis01@hotmail.com](mailto:sachis01@hotmail.com) (S. González-Castro).

### **Conflict of Interests**

The authors state that they have no conflict of interests.

### **References**

1. Soudack M, Yelin A, Simansky D, Ben-Nun A. Fluorodeoxyglucose-positive internal mammary lymph node in breast cancer patients with silicone implants: is it always metastatic cancer? *Eur J Cardiothorac Surg.* 2013;44:79–82.
2. Yun JS, Song SY, Na KJ, Lee CH, Jeon JB. Silicone granuloma mimicking a lymphatic metastasis in a lung cancer patient: a case report. *J Chest Surg.* 2023;56:53–5.